

***Coordinated Resource Offering Protocol (CROP)
Update***

Presented by:

**Catherine M. Mater
President – Mater Ltd.**

**Senior Fellow —The Pinchot Institute
Corvallis, Oregon; Washington, DC**

tel: (541) 753-7335 fax: (541) 752-2952; cell: (541) 760-5526





E-mail: catherine@mater.com

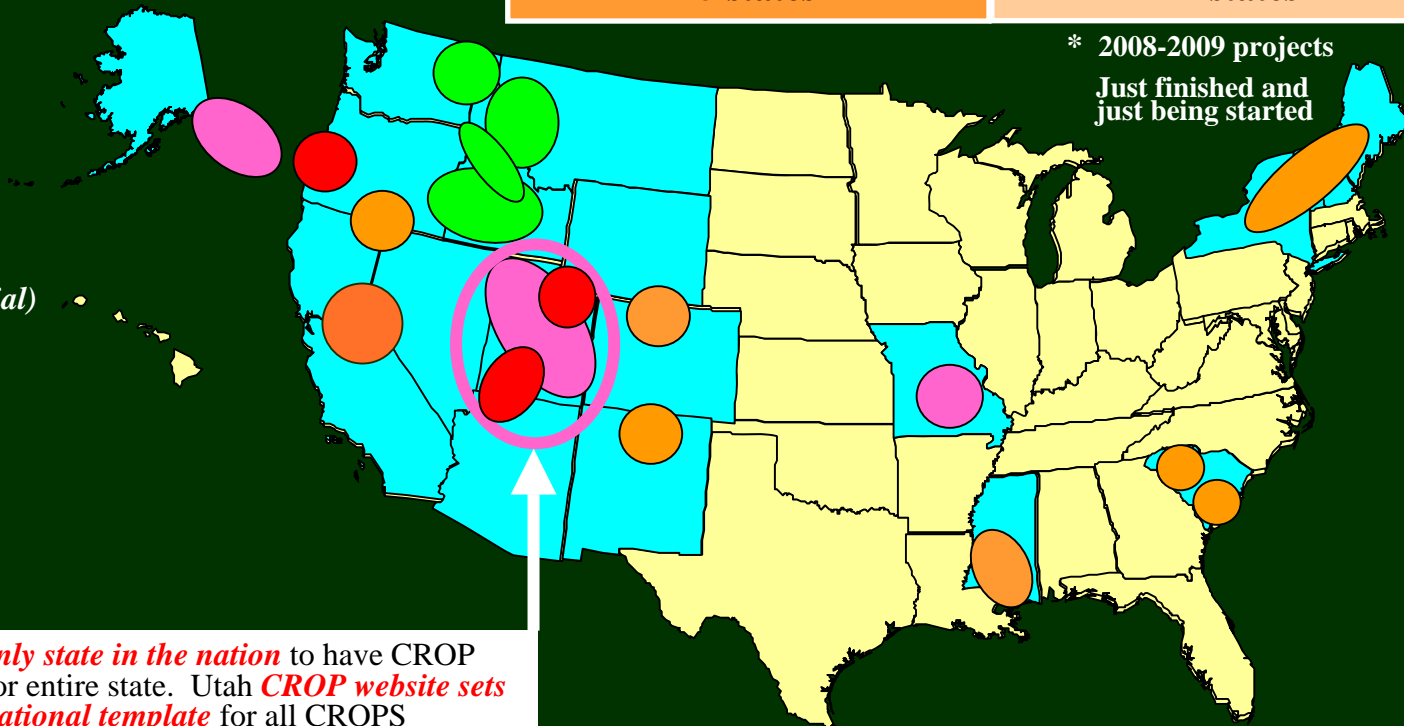
Coordinated Resource Offering Protocol

Initial: 36 National Forests
105 Ranger Districts
41 BLM Districts
15 states

New*: 25 National Forests
99 Ranger Districts
28 BLM Districts
12 states

* 2008-2009 projects
Just finished and just being started

-  Initial (completed)
-  Updated (from initial)
-  Just finished
-  Just starting (new)



What's done . . .

Table 1: 13 CROP landscapes completed

CROP Landscape	Biomass removal years	NF acres	BLM acres
Colorado	'06-'10	5,270,121	661,859
Mississippi	'07-'11	808,320	0
Missouri	'09-'13	1,490,949	0
New Mexico	'06-'10	3,432,225	1,441,386
Northeastern	'06-'10	515,224	0
South Carolina 1	'06-'10	257,789	0
South Carolina 2	'06-'10	433,419	0
Southeast Alaska	'08-'12	16,800,000	0
Southern OR/ Northern CA	'06-'10	3,347,829	203,000
Southwest Oregon (Cow Creek)	'07-'11	2,206,119	780,395
State of Utah	'08-'12	8,573,759	6,263,414
Tahoe Region	'07-'11	3,872,425	5,000
Western Oregon	'08-'12	2,819,300	1,257,325
Total acres USFS		~50 million or 26% of all US NF's	
Total acres BLM		~10.6 million or 4% of all BLM lands	

*CROP results and biomass supply . . .
 . . . right-sizing projects to match supply.*

CROP	Biomass offering	
	Avg. annual gT (<7'') *	<u>Enough supply for a 15 MW plant?</u>
Colorado	54,745	
Mississippi	45,525	
Missouri	191,015	✓
New Mexico	208,194	✓
Northeastern	16,319	
South Carolina 1	86,724	combined ✓
South Carolina 2	70,800	
Southeast Alaska	369,563	✓
Southern OR/Northern CA	235,985	✓
Southwest Oregon (Cow Creek)	236,099	✓
State of Utah	86,572	
Tahoe Region	189,436	✓
Western Oregon	223,252	✓

* Values do not include small log (+7''-12'') and large log (+12'') removal volumes

USFS National CROP websites

Static website:

www.forestandrangelands.gov/Woody_Biomass/resources/shtml

Interactive CROP website:

www.crop-usa.com

Woody BUG June 2009

Utah CROP

(Coordinated Resource Offering Protocol)

Search by Species: Aspen - Blue Spruce - Douglas Fir - Engelmann Spruce - Gambel Oak - Lodgepole Pine
Other Conifers - Pinyon Pine/Juniper -ponderosa Pine - Subalpine Fir - White Fir

How to Use this Site/FAQ

- Location Map
- Utah CROP Information
- NEPA Overview
- Resource Offering Overview
- Diameter Size Overview
- Utah All Agencies Overview

Last Updated 2008-08-01 00:00:00

State of Utah CROP: Aspen offering/removal 2009-2013
 (gT = 22,056 / S = 37.316 mmbf / L = 5.588 mmbf)
 (47.32 total mmbf)

gT = green tons (up to 7"dbh)
 S = small log mmbf (>7"-12"dbh)
 L = large log mmbf (>12"dbh)

BLM:

- A. Arizona Strip FO (AZ)
- B. Little Snake FO (CO)
- C. White River FO (CO)
- D. Cedar City FO (UT)
- E. Fillmore FO (UT)
- F. GSENM FO (UT)
- G. Kanab FO (UT)
- H. Moab FO (UT)
- I. Monticello FO (UT)
- J. Price FO (UT)
- K. Richfield FO (UT)
- L. Salt Lake FO (UT)
- M. St. George FO (UT)
- N. Kemmerer FO (WY)
- O. Pinedale FO (WY)
- P. Rock Springs FO (WY)

Ashley NF:

- Q. Flaming Gorge RD
- R. Roosevelt-Duchesne RD
- S. Vernal RD

Dixie NF:

- T. Cedar City RD
- U. Escalante RD
- V. Pine Valley RD
- W. Powell RD

Fishlake NF:

- X. East Zone-Fremont/Richfield RD
- Y. West Zone-Beaver/Fillmore RD

Kaibab NF:

National Forest Ranger Districts and Utah Trust Lands

Ashley NF: 2 RDs ~ 3%
 (gT = 1,921 / S = 0.829 / L = 0.049)

Dixie NF: 2 RDs ~ 12%
 (gT = 0 / S = 3.716 / L = 1.950)

Fishlake NF: 2 Zones ~ 29%
 (gT = 18,185 / S = 8.040 / L = 1.835)

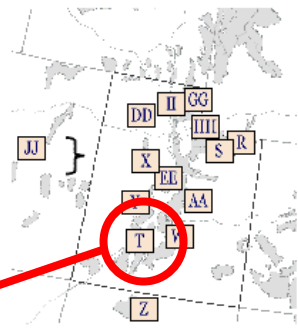
Kaibab NF: 1 RD ~ 1%
 (gT = 120 / S = 0.072 / L = 0.144)

Utah State Trust Lands: 19%
 (gT = 880 / S = 8.624 / L = 0.000)

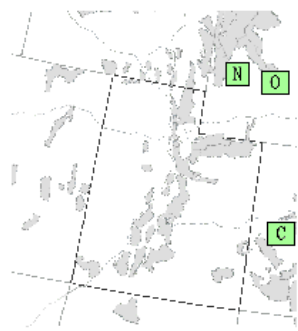
Manti-La Sal NF: 2 RDs ~ 3%
 (gT = 0 / S = 0.500 / L = 0.850)

Uinta NF: 1 RD ~ 4%
 (gT = 0 / S = 1.020 / L = 0.660)

Wasatch-Cache NF: 3 RDs ~ 3%
 (gT = 0 / S = 1.625 / L = 0.100)



BLM Field Offices



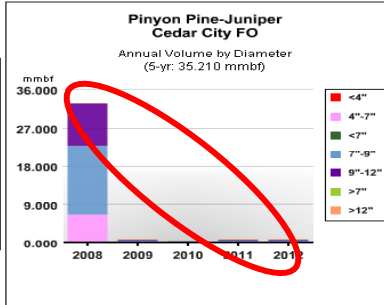
WY-BLM: 2 FOs ~ 1%
 (gT = 950 / S = 0.190 / L = 0.000)

CO-BLM: 1 FO ~ 27%
 (gT = 0 / S = 12.800 / L = 0.000)

Woody BUG June 2009

Pinyon Pine-Juniper 5-year offering by Agency

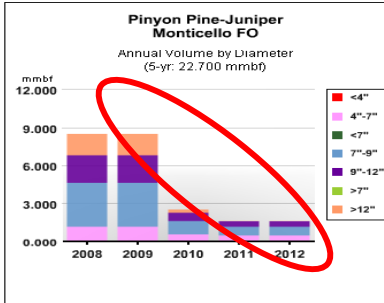
Pinyon Pine-Juniper UTBLM: Cedar City FO	5-yr = 35.2 mmbf
gT = 34,585	<ul style="list-style-type: none"> • <4" = 0.0 % (0.000 mmbf) • 4-7" = 19.6 % (6.917 mmbf) • <7" = 0.0 % (0.000 mmbf)
S = 27.793	<ul style="list-style-type: none"> • 7-9" = 49.4 % (17.405 mmbf) • 9-12" = 29.5 % (10.388 mmbf) • >7" = 0.0 % (0.000 mmbf)
L = 0.500	<ul style="list-style-type: none"> • >12" = 1.4 % (0.500 mmbf)



View Offering By Year: 2008 ~ 2009 ~ 2010 ~ 2011 ~ 2012
[View 5-Year Data Table](#)

Pinyon Pine-Juniper 5-year offering by Agency

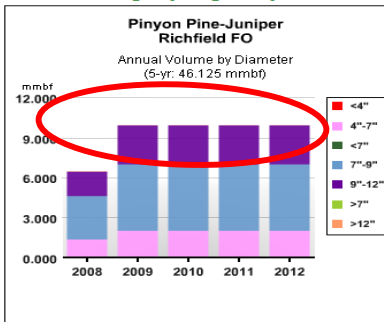
Pinyon Pine-Juniper UTBLM: Monticello FO	5-yr = 22.7 mmbf
gT = 18,850	<ul style="list-style-type: none"> • <4" = 0.0 % (0.000 mmbf) • 4-7" = 18.6 % (3.770 mmbf) • <7" = 0.0 % (0.000 mmbf)
S = 15.130	<ul style="list-style-type: none"> • 7-9" = 41.1 % (9.330 mmbf) • 9-12" = 25.6 % (5.800 mmbf) • >7" = 0.0 % (0.000 mmbf)
L = 3.800	<ul style="list-style-type: none"> • >12" = 16.7 % (3.800 mmbf)



View Offering By Year: 2008 ~ 2009 ~ 2010 ~ 2011 ~ 2012
[View 5-Year Data Table](#)

Pinyon Pine-Juniper 5-year offering by Agency

Pinyon Pine-Juniper UTBLM: Richfield FO	5-yr = 46.1 mmbf
gT = 46,363	<ul style="list-style-type: none"> • <4" = 0.0 % (0.000 mmbf) • 4-7" = 20.1 % (9.273 mmbf) • <7" = 0.0 % (0.000 mmbf)
S = 36.728	<ul style="list-style-type: none"> • 7-9" = 50.0 % (23.043 mmbf) • 9-12" = 29.7 % (13.685 mmbf) • >7" = 0.0 % (0.000 mmbf)
L = 0.125	<ul style="list-style-type: none"> • >12" = 0.3 % (0.125 mmbf)



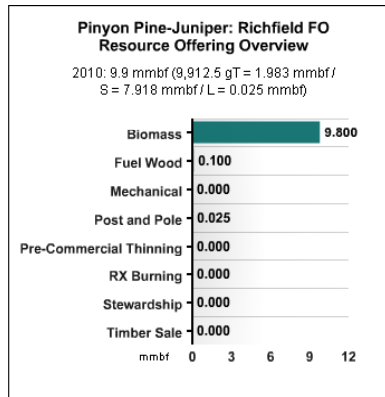
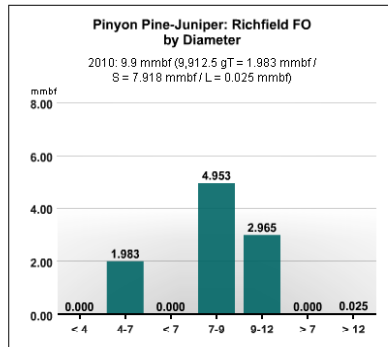
View Offering By Year: 2008 ~ 2009 ~ 2010 ~ 2011 ~ 2012
[View 5-Year Data Table](#)

Removal by multiple agencies within the CROP landscape

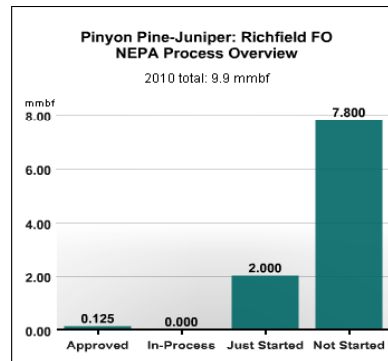
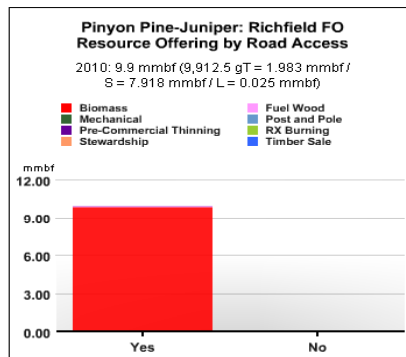
... how levelized?

Richfield FO: Pinyon Pine-Juniper for 2010

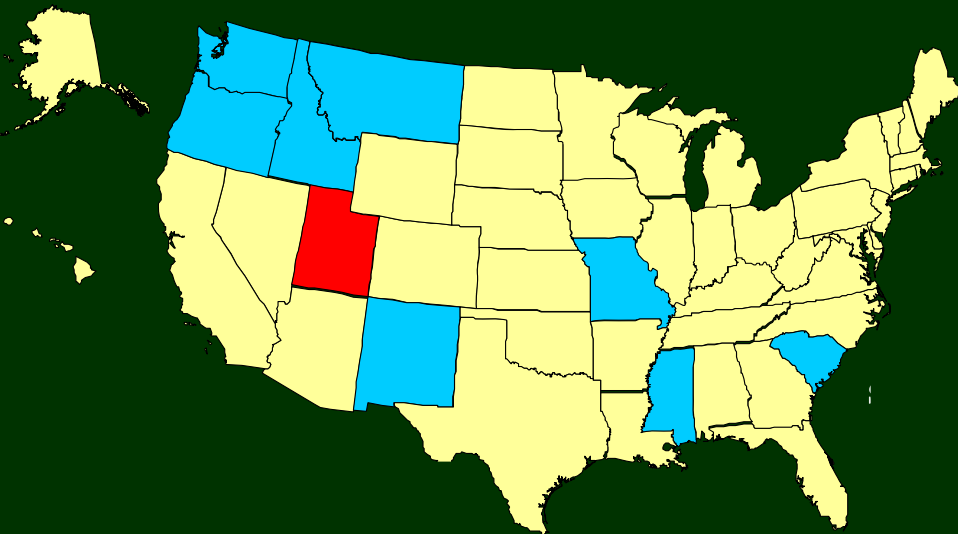
(9,913 gT = 1.983 mmbf / S = 7.918 mmbf / L = 0.025 mmbf)
(1 yr Total: 9.925 mmbf)



... and detail breakout by specific agency per year



Nine (9) additional CROP results in eight states to be transferred to the interactive website within the next three months



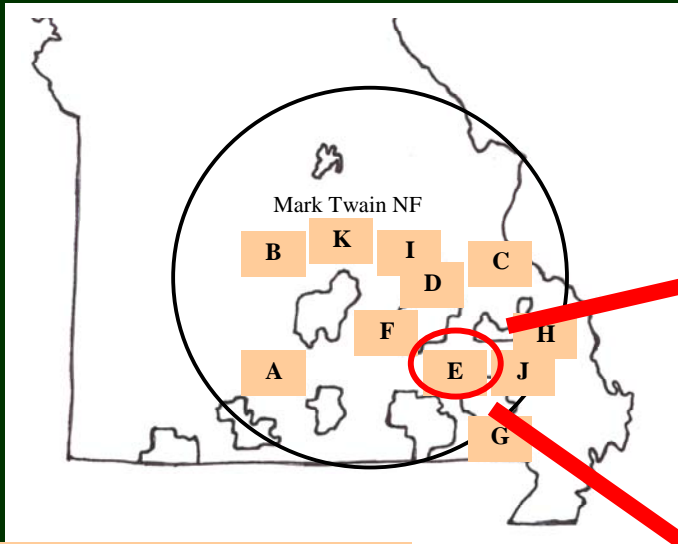
CROP name (location)	Supply data years
NE Washington CROP	Just finishing '09-'13
NW Montana	Just finishing '09-'13
North Central Idaho	Just finishing '09-'13
SW Idaho	Just finishing '09-'13
New Mexico	'06-'10
S. Carolina (2 CROPs consolidated)	'06-'10
Missouri	'09-'13
Western Oregon	'08-'12
Mississippi	'07-'11

Next Steps for CROP:

- **Transfer and update** all existing CROP project data to interactive website within next year.
- **Complete CROP analysis** across remainder NF lands in US in next year for inclusion in interactive website.
- Add interactive CROP web link to **DataBasin** (www.databasin.org) “landing” for state-of-art conservation update per biomass supplier in critical areas (*rare species, T&E, protected lands, fire predictability, WUI lands, critical habitat*).

Woody BUG June 2009

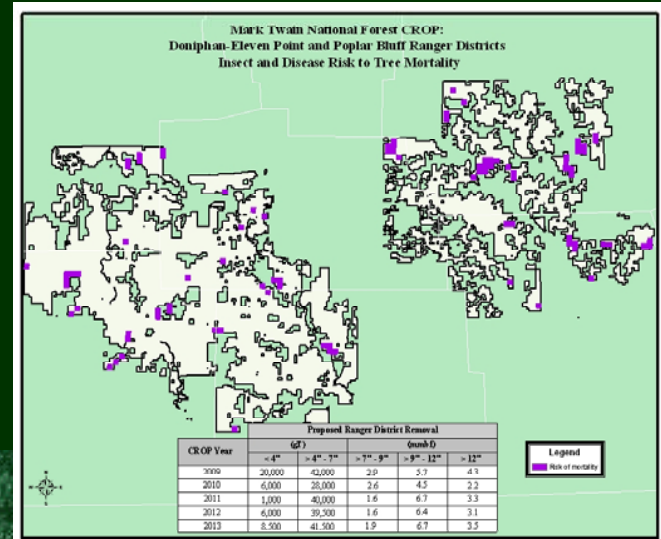
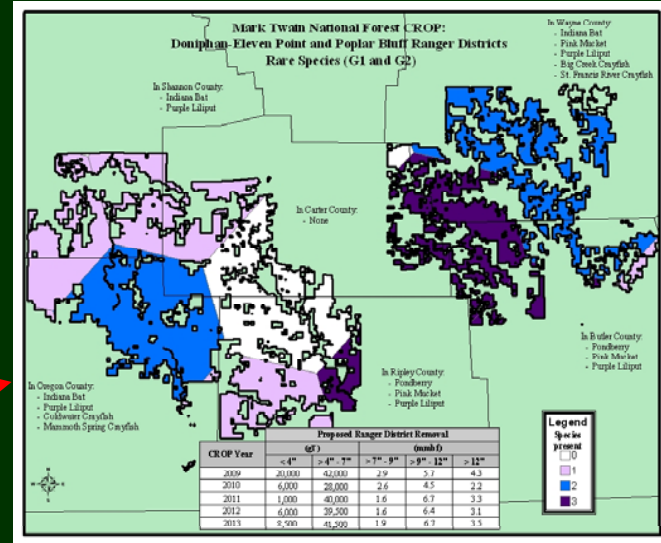
Using the Missouri CROP as an example:
 (Doniphan/Eleven Pt/Poplar Blf RD)



CROP and DataBasin

Rare Species

Insect/Disease Risk to Tree Mortality



Proposed Next Steps for Woody BUG:

- For public lands: establish *stronger alliance between biomass inventory-based estimates and real-time performance-based estimates*. CROP and FIA should be working hand-in-hand to help 'right-size' projects across US.
- For private lands: actively support *inclusion of private land biomass data within CROP landscapes*. Public lands hold unique responsibility to help facilitate responsible, sustainable biomass removal from private forestlands.
- *Expand CROP modeling to include agricultural biomass within same landscapes*. Woody biomass can no longer work in isolation of other feedstocks in same landscapes that must be combined in technology use to achieve federal fuel and energy mandates.